

# **IRDPX – Te Reo Māori**

- Input
- Recognition
- Discrimination
- Production
- Extension

## **Context**

- Tohutohu

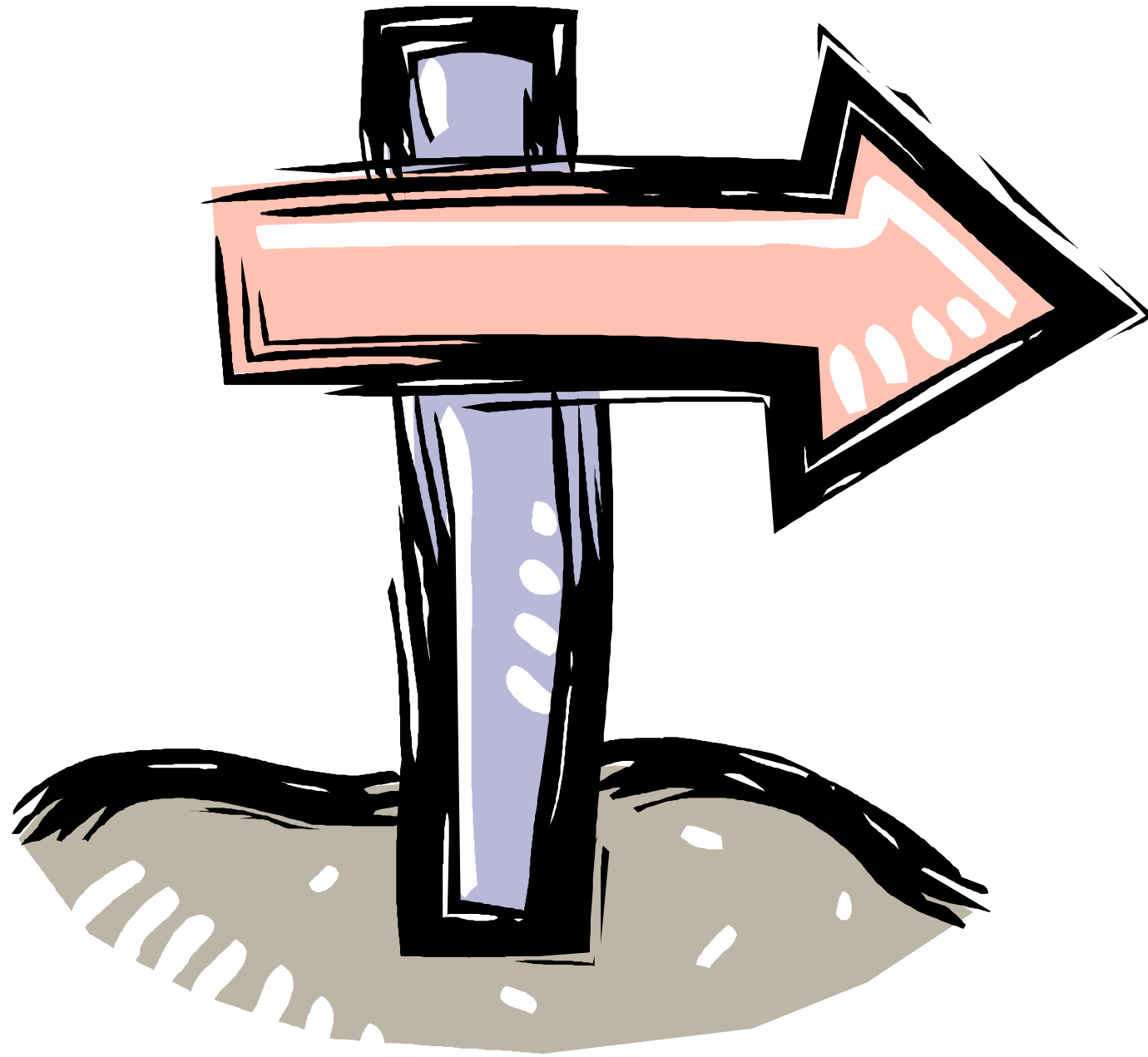
## **Target Vocabulary**

- Taha Katau
- Taha Māui
- Tika Tonu
- Whakawhiti
- Whakararo
- Whakarunga
- Whānau

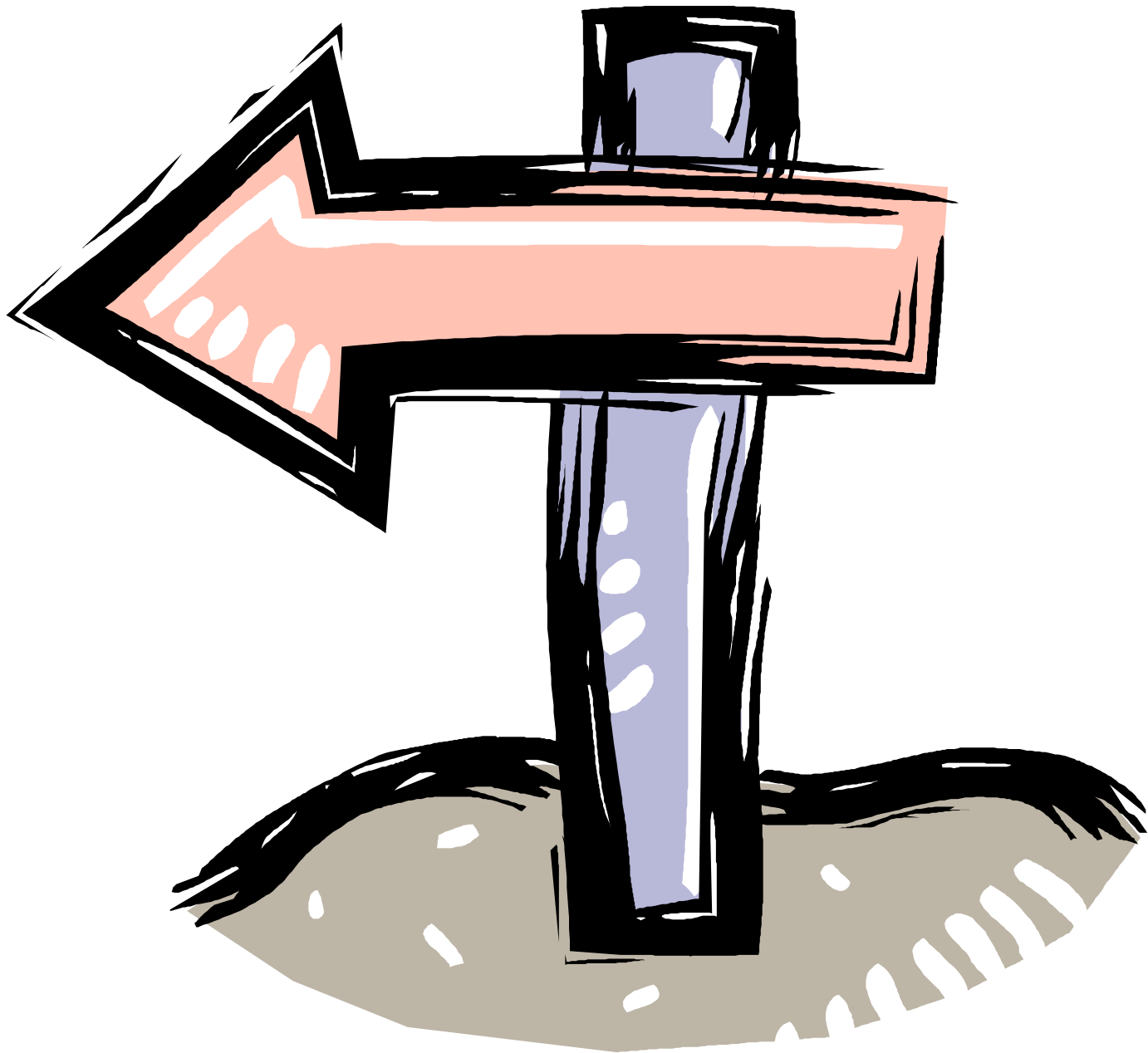
## **Instructions**

- Print pages 2-13 (double sided)
- The target vocabulary will be printed on one side
- Any cues / prompts associated with the target vocabulary will be printed on the reverse side

**Tana Kawa**



**Tana Maawi**

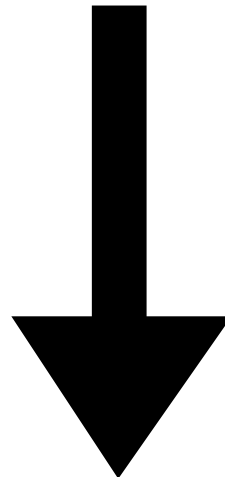
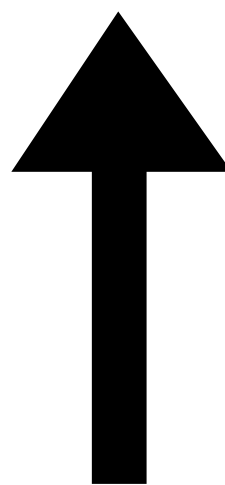
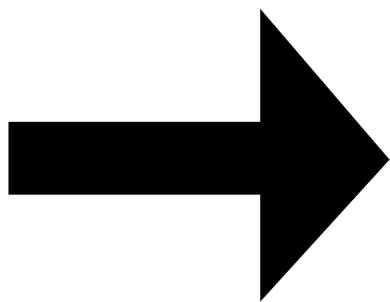
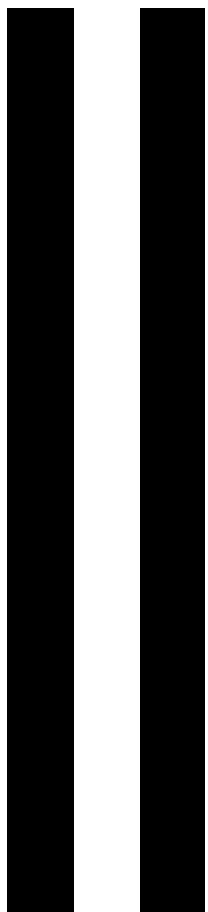
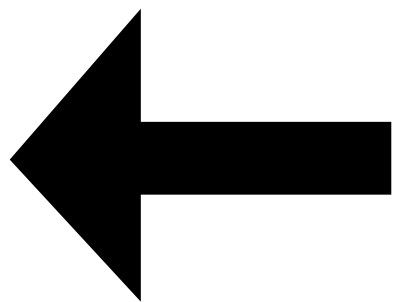


**Tika Tona**

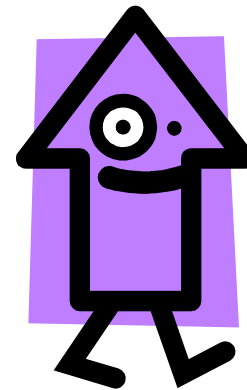
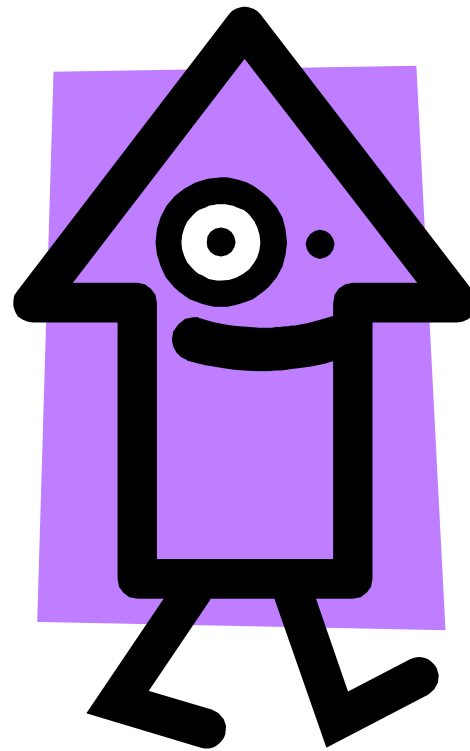
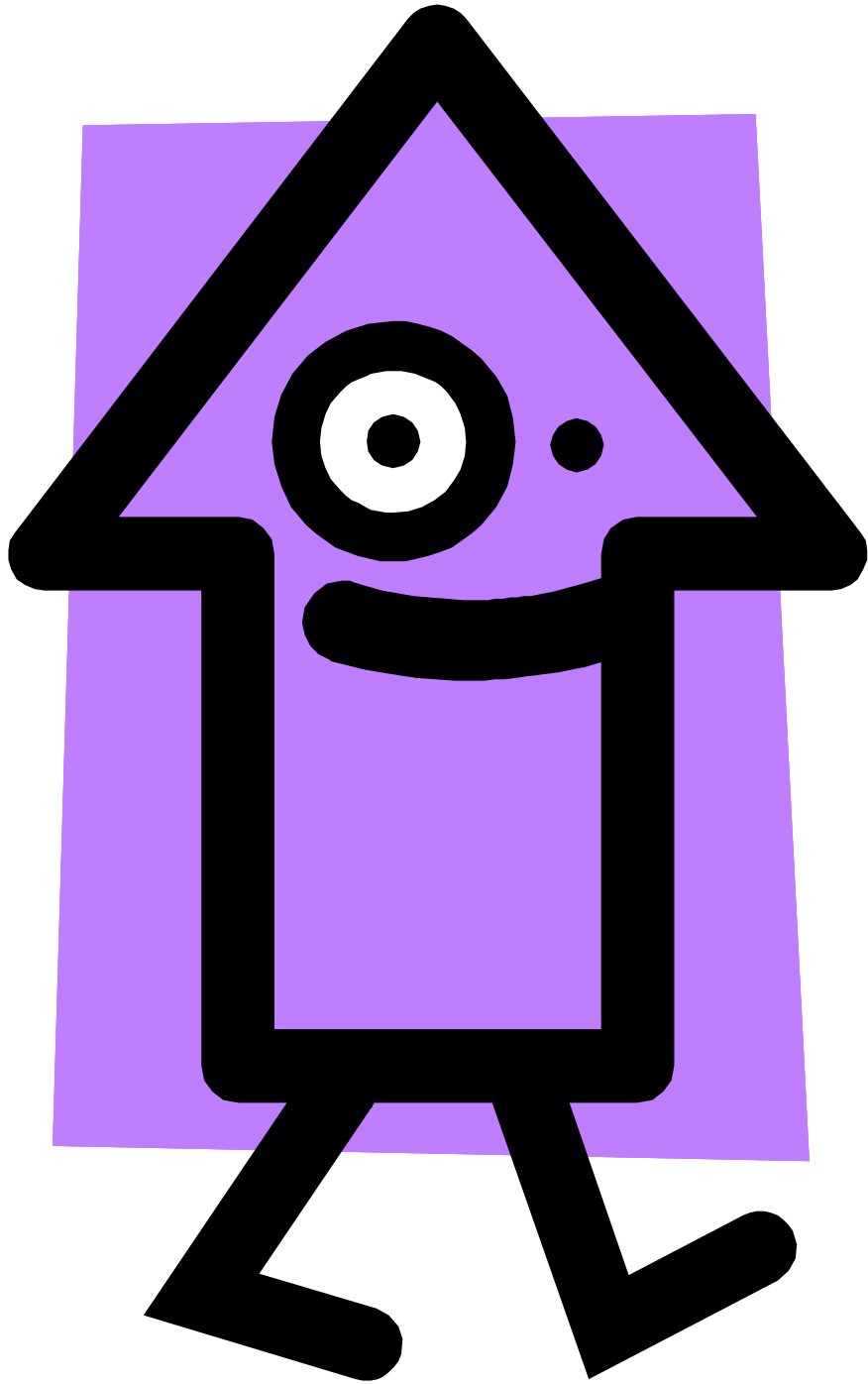


Wnakawnti





**Whakarungā**



**Wnawano**

